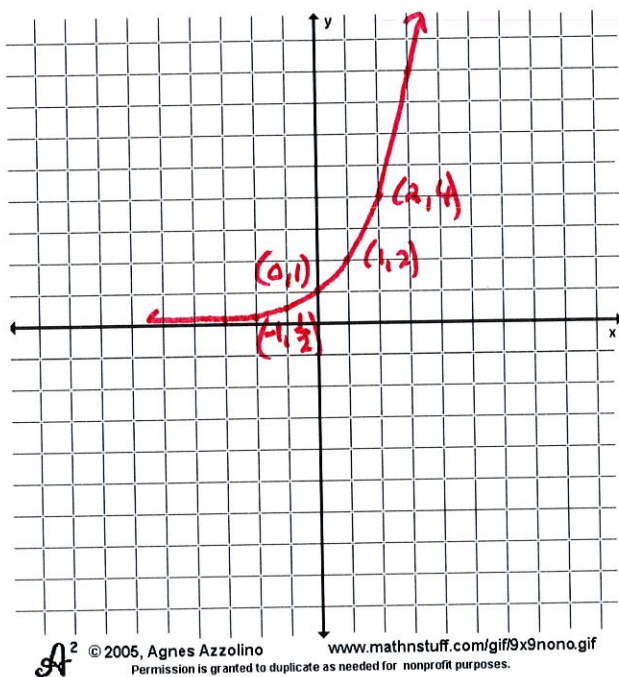


Name: _____

Directions: Determine an equation of each exponential graph shown.

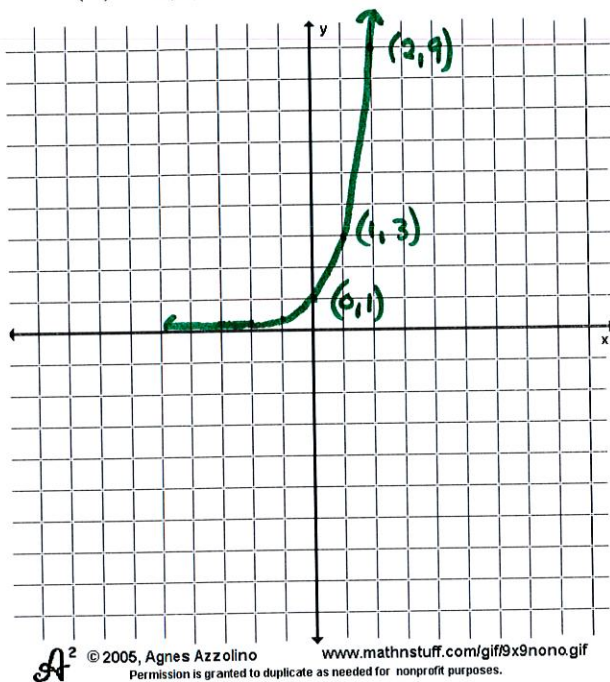
1. $f(x) = a(b)^x$

$f(x) = ()^x$



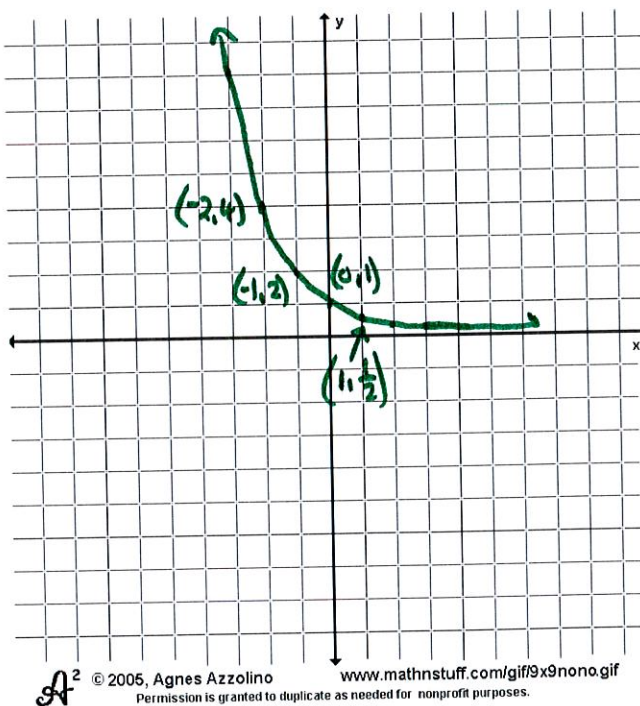
2. $g(x) = a(b)^x$

$g(x) = ()^x$



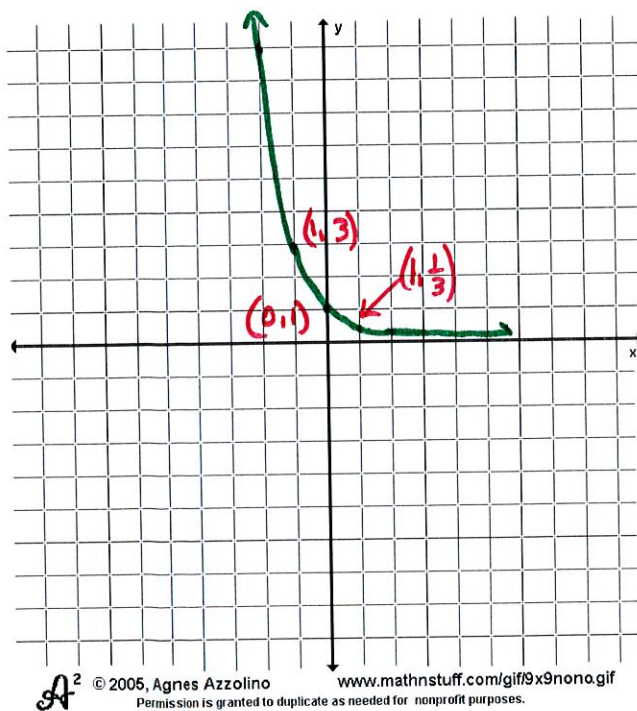
3. $f(x) = a(b)^x$

$f(x) = ()^x$



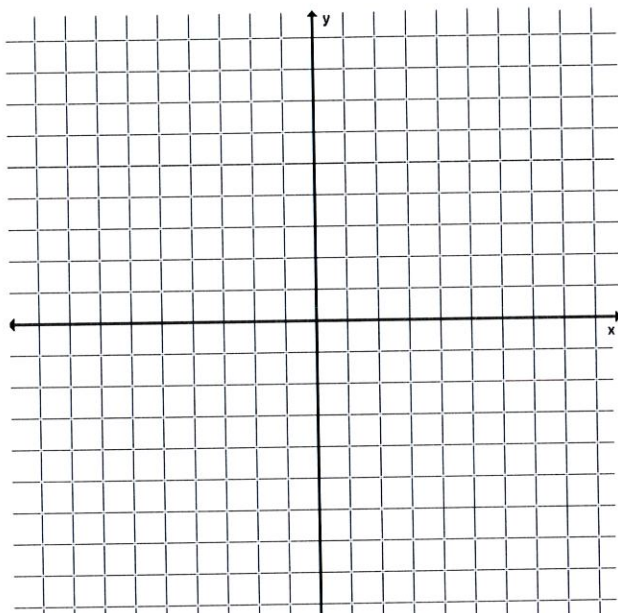
4. $g(x) = a(b)^x$

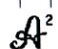
$g(x) = ()^x$



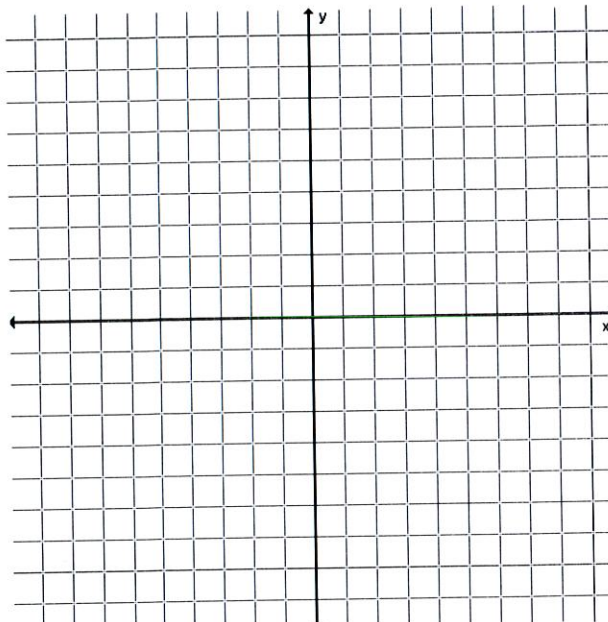
Directions: Graph the exponential function given.

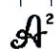
5. $f(x) = \left(\frac{1}{2}\right)^x$



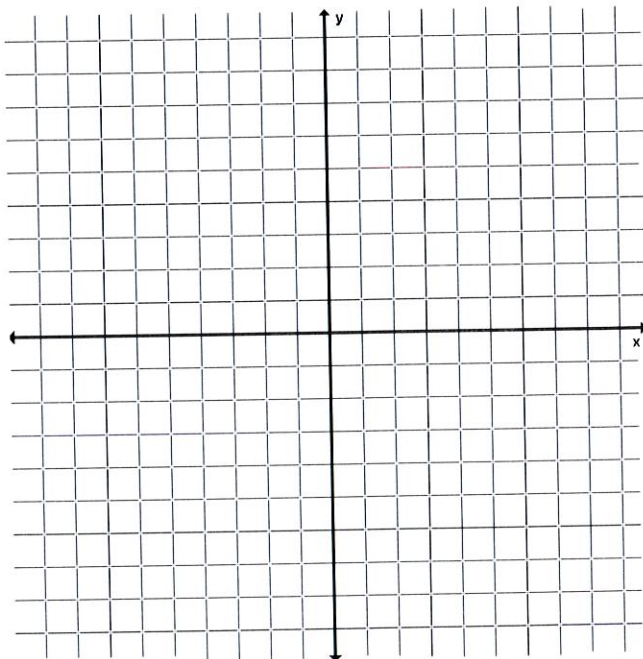
 © 2005, Agnes Azzolino
www.mathnstuff.com/gif9x9nono.gif
Permission is granted to duplicate as needed for nonprofit purposes.

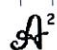
6. $g(x) = (2)^x$



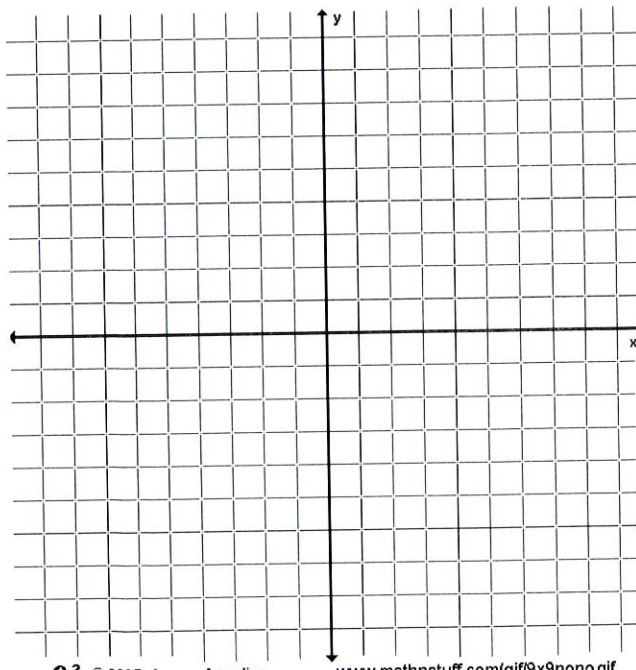
 © 2005, Agnes Azzolino
www.mathnstuff.com/gif9x9nono.gif
Permission is granted to duplicate as needed for nonprofit purposes.

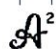
7. $f(x) = \left(\frac{1}{3}\right)^x$



 © 2005, Agnes Azzolino
www.mathnstuff.com/gif9x9nono.gif
Permission is granted to duplicate as needed for nonprofit purposes.

8. $g(x) = (3)^x$

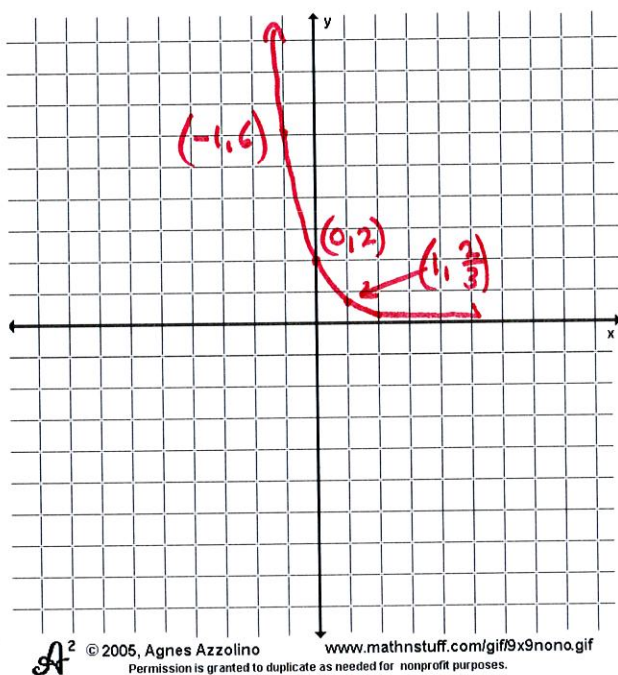


 © 2005, Agnes Azzolino
www.mathnstuff.com/gif9x9nono.gif
Permission is granted to duplicate as needed for nonprofit purposes.

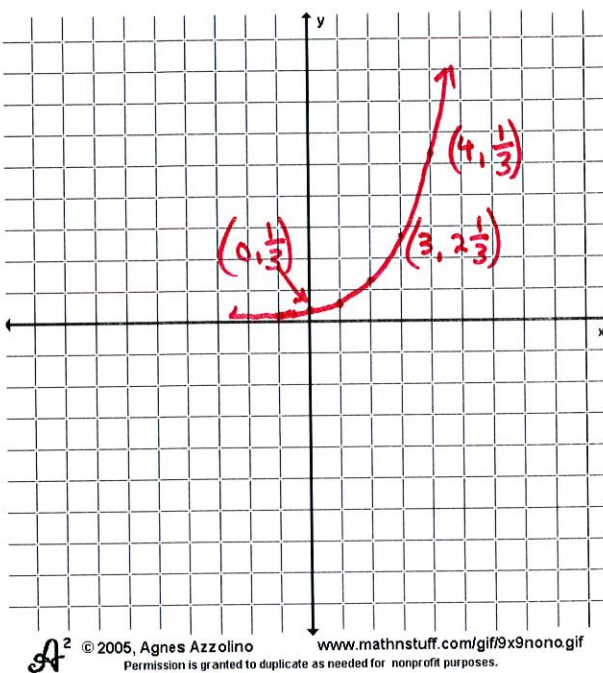
Name: _____

Directions: Determine an equation of each exponential graph shown.

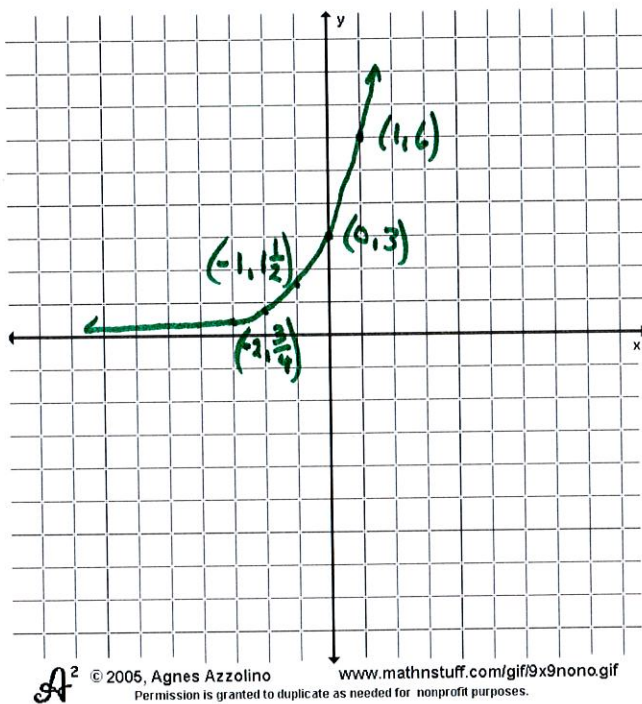
1. $f(x) = a(b)^x$ $f(x) = ()^x$



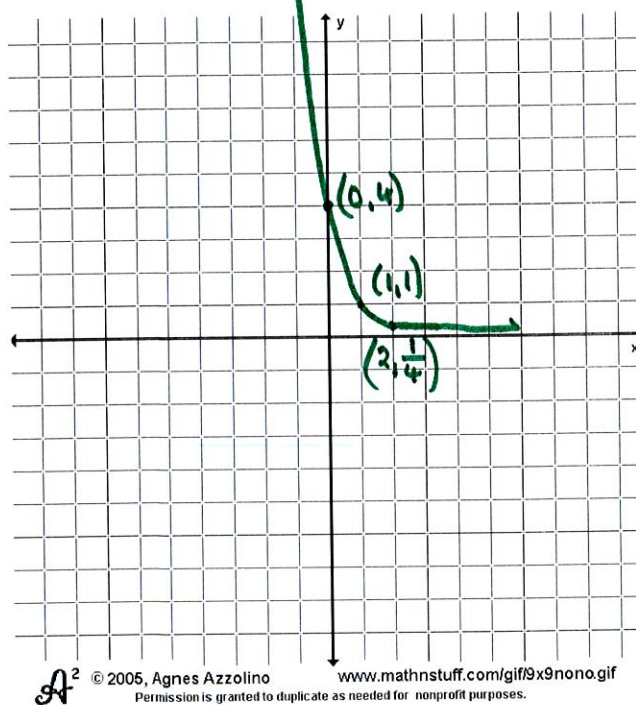
2. $g(x) = a(b)^x$ $g(x) = ()^x$



3. $f(x) = a(b)^x$ • $f(x) = ()^x$

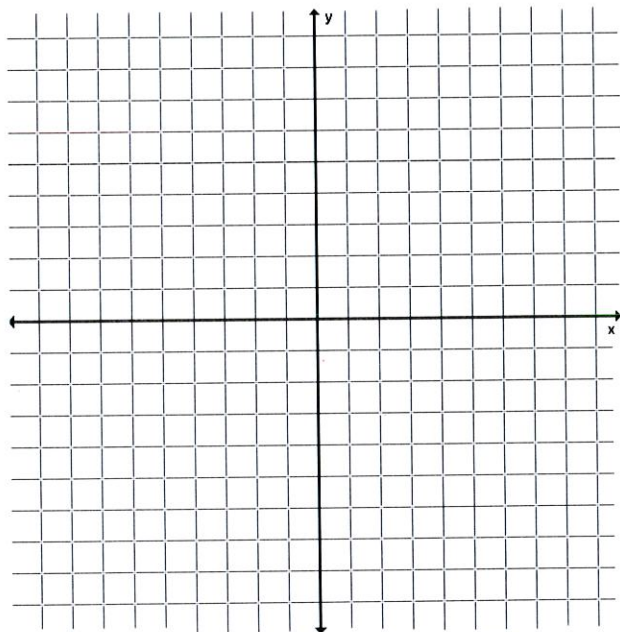


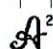
4. $g(x) = a(b)^x$ $g(x) = ()^x$



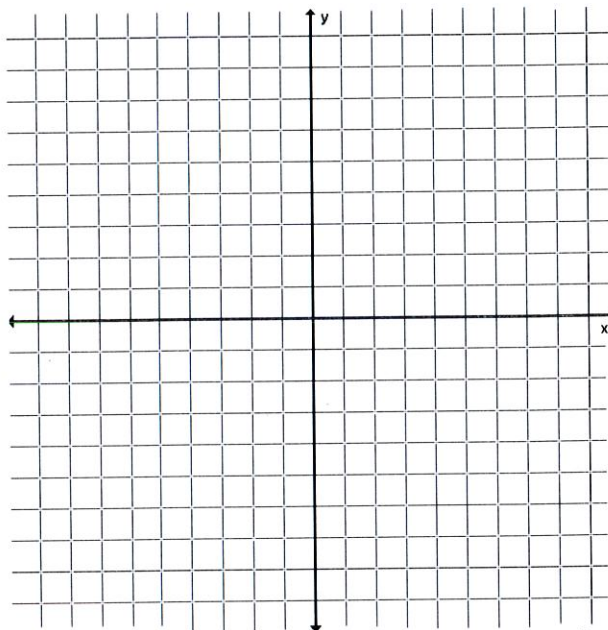
Directions: Graph the exponential function given.

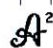
5. $f(x) = \frac{1}{2}(2)^x$



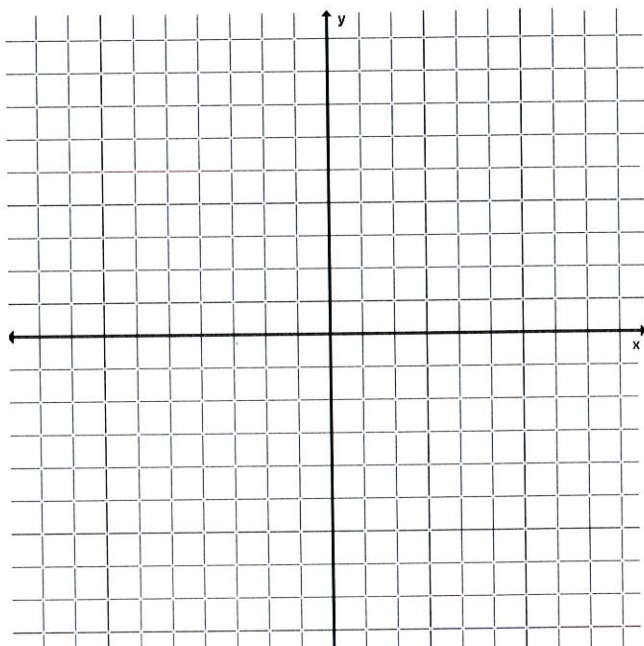
 © 2005, Agnes Azzolino www.mathnstuff.com/gif/9x9nono.gif
Permission is granted to duplicate as needed for nonprofit purposes.

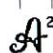
6. $g(x) = 3\left(\frac{1}{2}\right)^x$



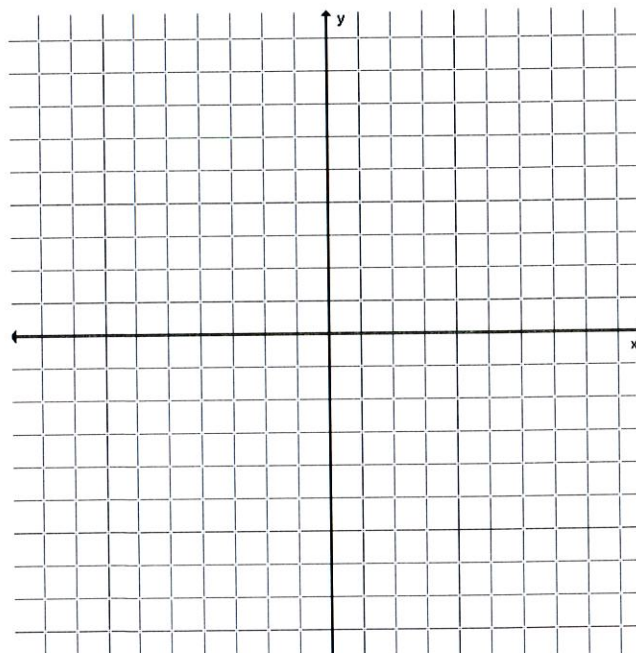
 © 2005, Agnes Azzolino www.mathnstuff.com/gif/9x9nono.gif
Permission is granted to duplicate as needed for nonprofit purposes.

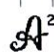
7. $f(x) = -(2)^x$



 © 2005, Agnes Azzolino www.mathnstuff.com/gif/9x9nono.gif
Permission is granted to duplicate as needed for nonprofit purposes.

8. $g(x) = -2\left(\frac{1}{3}\right)^x$



 © 2005, Agnes Azzolino www.mathnstuff.com/gif/9x9nono.gif
Permission is granted to duplicate as needed for nonprofit purposes.